

SikaColor[®]-300

ANTIQUING RELEASE

SikaColor[®]-340 SG

ANTIQUING RELEASE

SikaColor[®]-350

ANTIQUING AGENT

Colors shown on this chart approximate the color of the release powder. When the release powder is applied to colored concrete and stamped, the two colors will combine and create variations of color. The amount of release color retained after washing will also vary depending on the condition of the concrete when it was stamped.

Concrete color is altered by many factors, including cement and aggregate color, slump, finishing practices, and curing method. Using the contemplated materials and construction techniques, representative samples should be cast for approval, especially when exact color matching is important.

Please indicate when ordering:

- SikaColor[®]-300 Antiquing Release: R#
- SikaColor[®]-340 SG Antiquing Release: SGR#
- SikaColor[®]-350 Antiquing Agent: PT#



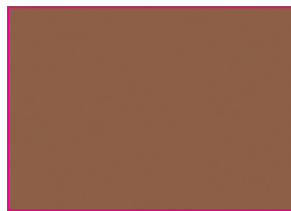
R12/SGR12/PT12 Storm Gray



R13/SGR13/PT13 Deep Charcoal



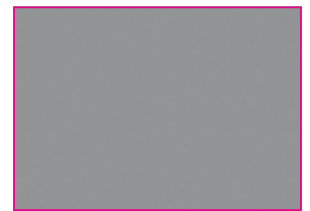
R23/SGR23/PT23 Smoke



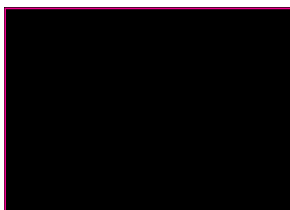
R18/SGR18/PT18 Chestnut



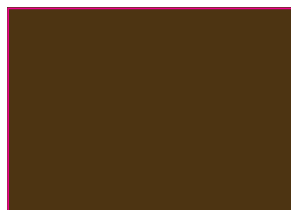
R28/SGR28/PT28 Slate Gray



R26/SGR26/PT26 Cape Cod Gray



R33/SGR33/PT33 Black



R27/SGR27/PT27 Westwood Brown



R29/SGR29/PT29 Wheat



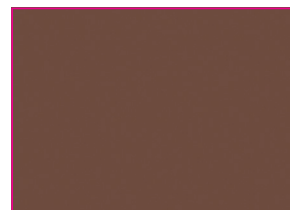
R22/SGR22/PT22 Arena Buff



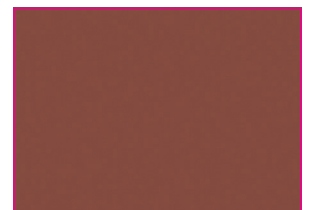
R25/SGR25/PT25 Colina Tan



R14/SGR14/PT14 Walnut



R19/SGR19/PT19 Russet



R15/SGR15/PT15 Brick Red

SikaColor®-300 ANTIQUING RELEASE

SikaColor®-340 SG ANTIQUING RELEASE

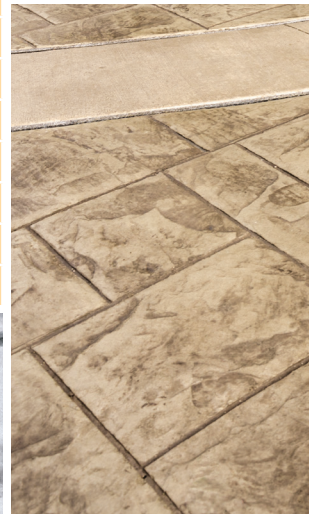
SikaColor®-350 ANTIQUING AGENT

SikaColor®-300 Antiquing Release and SikaColor®-340 SG Antiquing Release are colored powder bond breakers used with stamping mats, texturing skins and texture rollers. The products provide accent colors that complement or contrast with the underlying concrete surface. Additionally, they enhance the transfer of the detailed pattern and texture, and prolong the surface life of the stamping mat or texturing tool. They are compatible with integrally colored concrete, color hardened concrete and stampable cementitious overlays. SikaColor®-300 Antiquing Release and SikaColor®-340 SG Antiquing Release are finely ground, streak free powders that are a blend of UV-resistant pigments and water repelling additives. Broadcast SikaColor®-300 Antiquing Release or SikaColor®-340 SG Antiquing Release over the concrete surface prior to placing the stamping or texturing tools. As the imprinting tool is pressed into the plastic concrete surface, a portion of the antiquing release is embedded into the textured surface of the concrete. When the tool is removed, it breaks cleanly, without marring the colored concrete surface. Upon washing and sealing, the difference in color between the base concrete and the release creates a visually attractive antiqued look on the concrete. The added color visually enhances the depth of the texture. The amount of release agent retained on the concrete will vary. Use a SikaColor®-300 Antiquing Release or SikaColor®-340 SG Antiquing Release color that matches or contrasts with the concrete color. Add a combination of colors to create interesting shading and highlights on the finished concrete surface.

SikaColor®-350 Antiquing Agent is used to antique unsealed hardened textured concrete and unsealed overlaid textured surfaces. SikaColor®-350 Antiquing Agent mixes with water and is applied to the concrete surface to add a natural antiquing color to newly textured concrete, overlays or old weathered textured surfaces.

SikaColor®-300 ■ SikaColor®-350 Direct Crossover Color Reference Table

LITHOCHROME® Antiquing Release Pro and LITHOTIQUE™ Antiquing Agent Colors	Perma-Cast® Antiquing Release and Perma-Tique® Antiquing Agent Colors
A-33 Classic Gray	R12/PT12 Storm Gray
A-21 Deep Charcoal	R13/PT13 Deep Charcoal
A-31 Walnut	R14/PT14 Walnut
A-26 Brick Red	R15/PT15 Brick Red
A-25 La Crescenta Brown	R18/PT18 Chestnut
A-24 Russet	R19/PT19 Russet
A-51 Steadman Buff	R22/PT22 Arena Buff
A-54 Smoke Beige	R23/PT23 Smoke
A-55 Pecan Tan	R25/PT25 Colina Tan
A-57 Platinum Gray	R26/PT26 Cape Cod Gray
A-50 Slate Gray	R28/PT28 Slate Gray
A-58 Swiss Coffee	R29/PT29 Wheat



SIKA CORPORATION
625 West Illinois Avenue
Aurora, IL 60506
Phone: 800 282 3388
usa.sika.com

Our most current General Sales Conditions shall apply.
Please consult the Product Data Sheets prior to any use and processing.

BUILDING TRUST

